

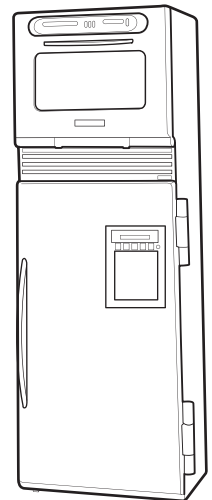
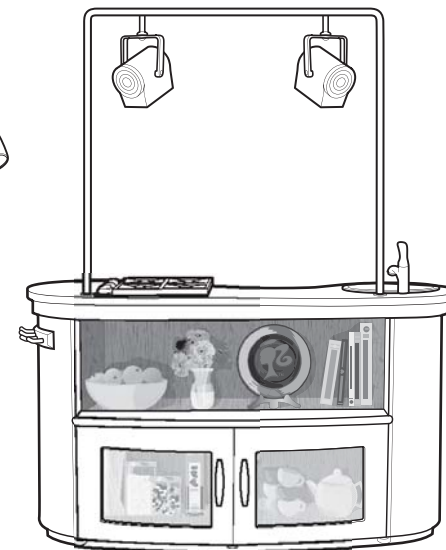
3+

Barbie

INSTRUCTIONS

R5299-0920
R5688-0920

MATEL®



Doll cannot stand alone.

CONSUMER INFORMATION

Need Assistance? Visit service.mattel.com or call 1-800-524-8697 (US and Canada only), M-F 9AM - 7PM & SAT 11AM - 5PM, Eastern.

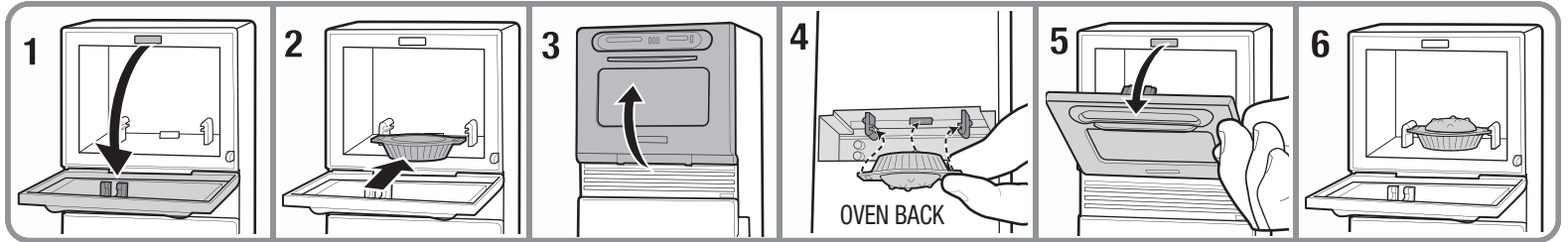
SERVICE.MATTEL.COM

Mattel Canada Inc., Mississauga, Ontario L5R 3W2. You may call us free at 1-800-524-8697.
 Mattel U.K. Ltd., Vanwall Business Park, Maidenhead SL6 4UB. Helpline 01628 500303.
 Mattel Australia Pty., Ltd., Richmond, Victoria. 3121. Consumer Advisory Service - 1300 135 312.
 Mattel East Asia Ltd., Room 1106, South Tower, World Finance Centre, Harbour City, Tsimshatsui, HK, China.
 Diimport & Diedarkan Oleh: Mattel SEA Ptd Ltd.(993532-P) Lot 13.5, 13th Floor, Menara Lien Hoe, Persiaran Tropicana Golf Country Resort, 47410 PJ. Tel:03-78803817, Fax:03-78803867.
 Mattel, Inc. 636 Girard Avenue, East Aurora, NY 14052. U.S.A. Consumer Relations 1-800-524-8697.

Contents: Please remove everything from the package and compare to the contents shown here. If any items are missing, please contact your local Mattel office. Keep these instructions for future reference as they contain important information.

WARNING:
 CHOKING HAZARD - Small parts.
 Not for children under 3 years.

Let's Play!



1. Open oven.

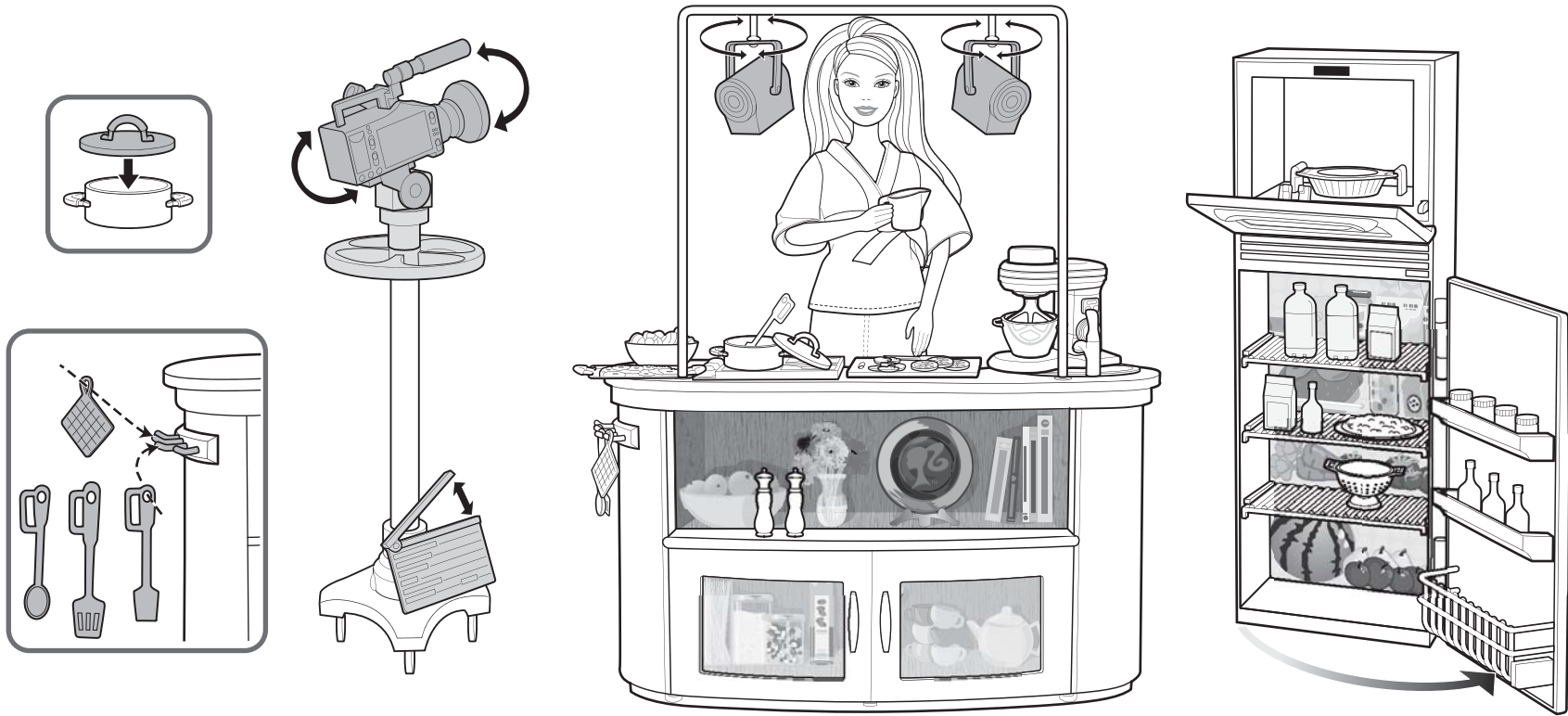
2. Insert "unbaked" cake in oven front.

3. Close oven door.

4. Insert "baked" cake in oven back.

5. Open oven door.

6. WOW! Cake "bakes"!



Fun and easy recipes for you!

