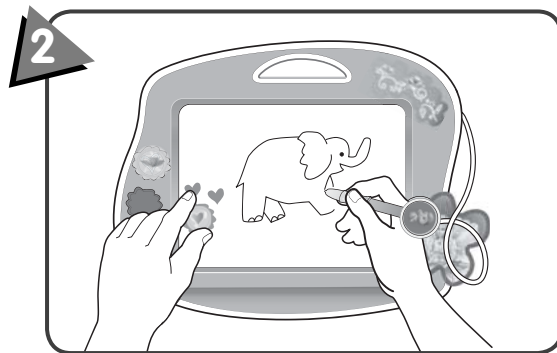
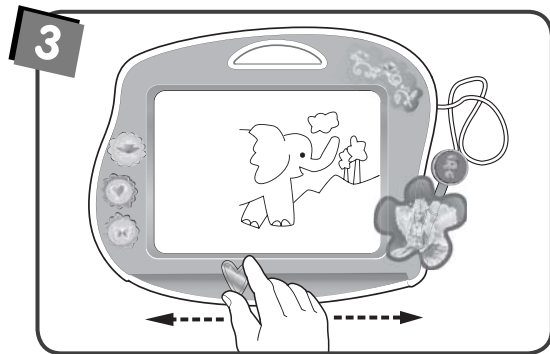


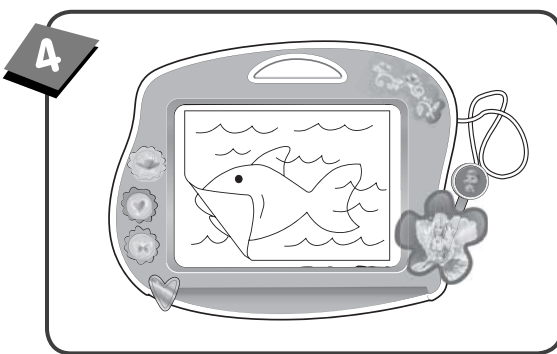
IMPORTANT! Before first-time use, completely darken the drawing screen with a magnetic stamper. Slide the eraser lever from side to side to clear the drawing screen. Repeat this procedure several times to enable clearest, darkest images.



- Use the magnetic stampers to add fun shapes to your drawing!
- Use the fine line pen to create your own drawings, play games or write messages.



- **To erase the drawing screen**, slide the eraser lever slowly from side to side.



- **To copy a drawing from a piece of paper** onto the drawing screen, place the paper on the drawing screen and trace over the lines of the drawing with the fine line pen.
Hint: Hang Doodle Pro™ on a wall and use it as a message board!

Call Fisher-Price® Consumer Relations, toll-free at **1-800-432-5437**, 9 AM - 7 PM EST Monday through Friday and 11AM - 5PM EST Saturday. Hearing-impaired consumers using TTY/TDD equipment, please call 1-800-382-7470. Or, write to: Fisher-Price® Consumer Relations 636 Girard Avenue East Aurora, New York 14052

For countries outside the United States:

CANADA: Questions? 1-800-567-7724. Mattel Canada Inc., 6155 Freemont Blvd., Mississauga, Ontario L5R 3W2.

GREAT BRITAIN: Mattel UK Ltd, Vanwall Business Park, Maidenhead SL6 4UB. Helpline: 01628 500302.

AUSTRALIA: Mattel Australia Pty. Ltd., 658 Church Street, Locked Bag #870, Richmond, Victoria 3121 Australia. Consumer Advisory Service 1300 135 312.

NEW ZEALAND: 16-18 William Pickering Drive, Albany 1331, Auckland.

ASIA: Mattel East Asia Ltd, Room 1106, South Tower, World Finance Centre, Harbour City, Tsimshatsui, HK, China.

IMPORTANT! To avoid damage to the drawing screen:

- Do not leave the magnetic stampers on the drawing screen for extended periods of time.
- Use only the fine line pen included.
- Do not use regular pencils, pens, crayons, or markers.
- Keep this toy away from extreme heat sources such as ovens, heaters and radiators.



Do not apply heavy pressure or force to the drawing screen. Heavy pressure is not necessary and could damage the drawing screen. A light touch makes a dark line.



Use only the special, fine line pen or stamper included. Do not use any other object on the drawing screen.