



# INSTRUCTIONS

3+



Asst. DWH41  
DWH42  
DWH43

## CONTENTS



DWH42



DWH43

Water toys sometimes get messy. Protect play surfaces before use. Drain, rinse, clean and dry all items thoroughly before storing.

Colour change will last longer if you do not expose this toy to intense heat or direct sunlight for prolonged periods of time.

Dolls cannot stand alone.

Each sold separately, subject to availability.

Caution: To avoid burns do not use water that is too hot, above 120°F(49°C).

### CONSUMER INFORMATION

Need Assistance? Visit [service.mattel.com](http://service.mattel.com) or call 1-800-524-8697 (US and Canada only).

[SERVICE.MATTEL.COM](http://SERVICE.MATTEL.COM)

Mattel, Inc., 636 Girard Avenue, East Aurora, NY 14052, U.S.A.  
Consumer Services 1-800-524-8697. Mattel U.K. Ltd., Vanwall Business Park, Maidenhead SL6 4UB. Helpline 01628 500303.  
Mattel Australia Pty., Ltd., Richmond, Victoria. 3121. Consumer Advisory Service - 1300 135 312. Mattel East Asia Ltd., Room

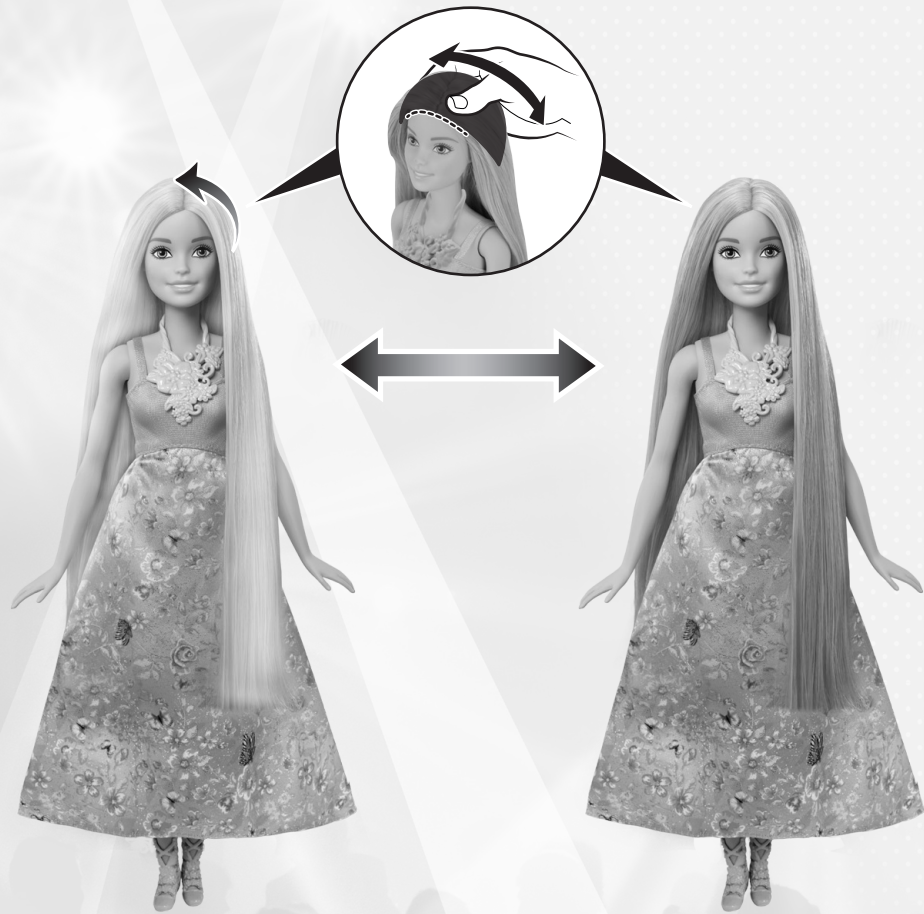
503-09, North Tower, World Finance Centre, Harbour City, Tsimshatsui, HK, China. Tel.: (852) 3185-6500. Diimport & Diedarkan Oleh: Mattel Southeast Asia Pte. Ltd., No 19-1, Tower 3 Avenue 7, Bangsar South City, No 8, Jalan Kerinchi, 59200 Kuala Lumpur, Malaysia. Tel: 03-78803817, Fax: 03-78803867.

**WARNING:**  
CHOKING HAZARD - Small parts.  
Not for children under 3 years.

Please remove everything from the package and compare to the contents shown here. If any items are missing, please contact your local Mattel office. Keep these instructions for future reference as they contain important information.

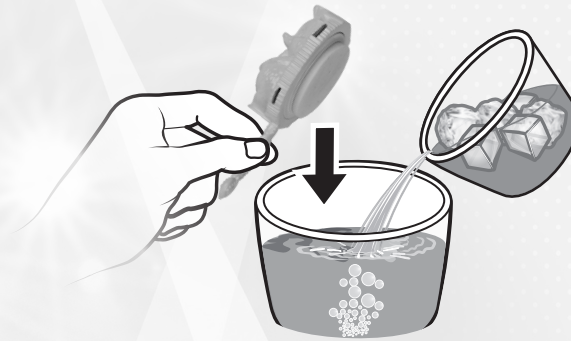
## Twist to change hair color

1



## Reveal Color Change Hair

2



Cups not included.

Dip sponge applicator into water (warm or ice-cold).

