



INSTRUCTIONS 3+



DPP90
DPY40

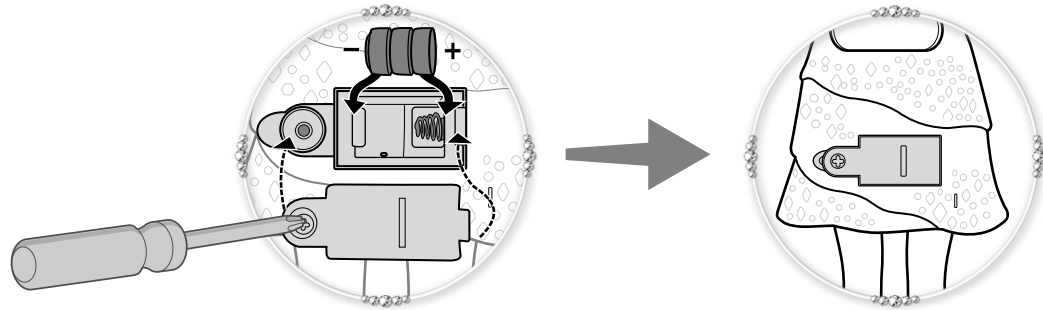
CONTENTS



DPP90



DPY40



Battery Replacement

Replace batteries when sound becomes distorted or lights dim. To replace batteries, use a Phillips head screwdriver (not included) to open battery cover. Insert 3 new AG13 (LR44) button cell batteries as shown. Use either AG13 (LR44) button cell batteries or equivalent. Replace battery cover and tighten screw. When exposed to an electrostatic source, the product may malfunction. If this problem occurs, reset the product by reinstalling the batteries.

Doll cannot stand alone.

Each sold separately, subject to availability.

This product emits flashing lights at 20 cycles per second.

Includes 3 AG13 (LR44) button cell batteries. Batteries included are for demonstration purposes only. Dispose of batteries safely.

CONSUMER INFORMATION

Need Assistance? Visit service.mattel.com or call 1-800-524-8697 (US and Canada only).

SERVICE.MATTEL.COM

Mattel, Inc., 636 Girard Avenue, East Aurora, NY 14052, U.S.A. Consumer Services 1-800-524-8697. Mattel U.K. Ltd., Vanwall Business Park, Maidenhead SL6 4UB. Helpline 01628 500303. Mattel Australia Pty., Ltd., Richmond, Victoria. 3121. Consumer Advisory Service - 1300 135 312. Mattel East Asia Ltd., Room 503-09, North Tower, World Finance Centre, Harbour City, Tsimshatsui, HK, China. Tel.: (852) 3185-6500. Diimport & Diedarkan



Please remove everything from the package and compare to the contents shown here. If any items are missing, please contact your local Mattel office. Keep these instructions for future reference as they contain important information.

Oleh: Mattel Southeast Asia Pte. Ltd., No 19-1, Tower 3 Avenue 7, Bangsar South City, No 8, Jalan Kerinchi, 59200 Kuala Lumpur, Malaysia. Tel: 03-78803817, Fax: 03-78803867.

Press for lights and music!

