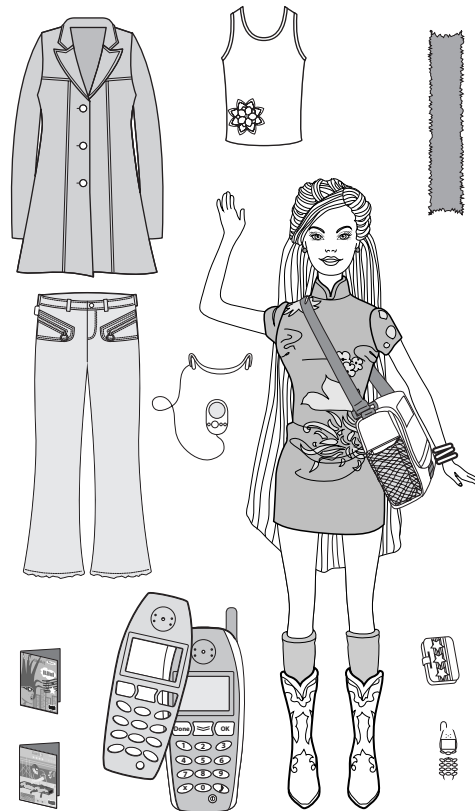


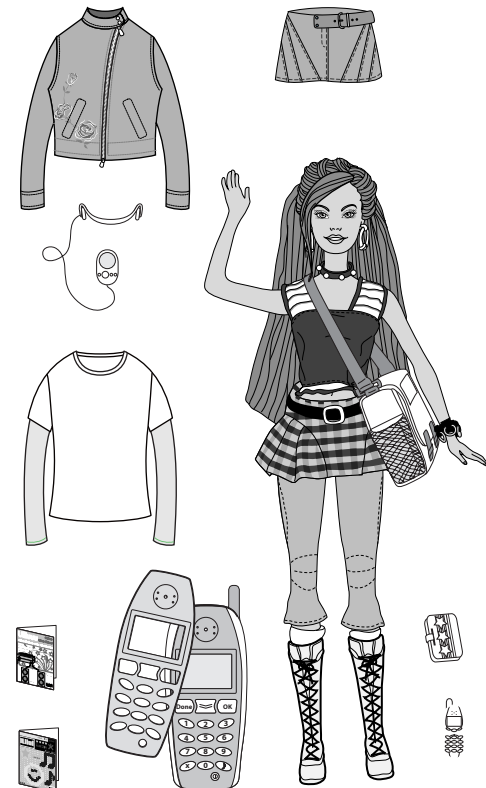
Barbie®

message
girls™

INSTRUCTIONS



C6784



C6785

Contents

Please remove everything from the package and compare to the contents shown here.

Keep these instructions for future reference as they contain important information.

Requires 3 AAA batteries, included.

For longer life use only alkaline batteries.

Dolls sold separately. Subject to availability.

Fashions, colors and decorations may vary.

ADULTS NOTE: Cut the plastic attachment with safety scissors and discard pieces.

© 2004 Mattel, Inc. El Segundo, CA 90245. U.S.A. All Rights Reserved.

CONSUMER INFORMATION

YOU CAN TELL IT'S MATEL!™ CALL us toll-free or write with any comments or questions about our products or service. Monday-Friday 8:00 a.m.-6:00 p.m. Eastern Time. Outside U.S.A., see telephone directory for Mattel listing.

Consumer Relations, Mattel, Inc.
333 Continental Blvd.
El Segundo, CA 90245 USA

1(800) 524-TOYS

WE ARE DEDICATED TO QUALITY PRODUCTS.



Mattel Canada Inc., Mississauga, Ontario L5R 3W2.

You may call us free at 1-800-665-6288.

Mattel U.K. Ltd., Vanwall Business Park, Maidenhead SL6 4UB. Help line 01628500303.

Mattel Australia Pty., Ltd., Richmond, Victoria. 3121. Consumer Advisory Service - 1300 135 312.

Mattel East Asia Ltd, Room 1106, South Tower, World Finance Centre, Harbour City, Tsimshatsui, HK, China

Diimport & Diedarkan Oleh: Mattel SEA Ptd Ltd.(993532-P) Lot 13.5, 13th Floor, Menara Lien Hoe, Persiaran Tropicana Golf Country Resort, 47410 PJ. Tel:03-78803817.

Fax:03-78803867.

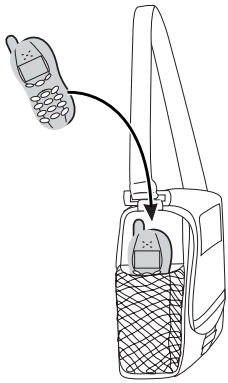
Mattel, Inc., El Segundo, CA 90245 U.S.A.

Consumer Affairs 1 (800) 524-Toys.



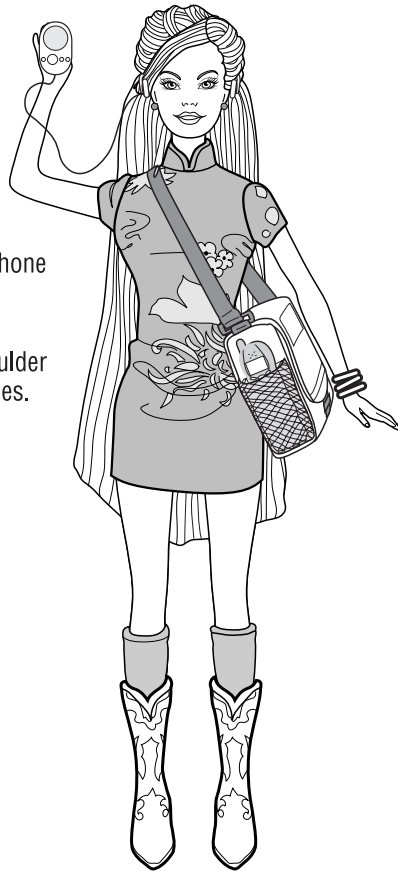
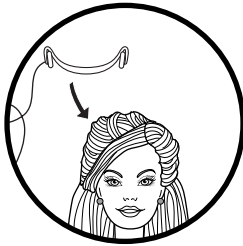
C6784-0920

Assembly

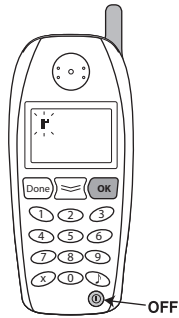


Insert Barbie® doll's phone into pouch on side of shoulder bag.

Phone must be in shoulder bag to receive messages.



Replaceable faceplates snap on and snap off, so you can change the look of your phone!



When the phone is OFF or in a "sleep" mode, press **OK** to see the animation only.



When the phone is ON, Press **OK** to select from 3 ring tones!

Play Time!

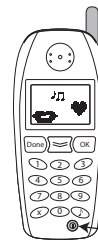
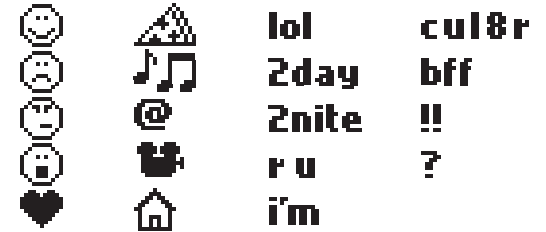
It's EZ. You'll ♥ it!

Send a message and you'll get one back!



Create your own messages!

Available Icons



STEP 1

Press **ON/OFF**.
Phone starts up!



STEP 2

Press **OK** to scroll through icons.



STEP 3

Press **OK** when you have the icon that you want. (Cursor moves to next position.)
Press **OK** if you want to change an icon.



STEP 4

Press **Done** when you have a message (up to 6 icons).
NOTE: continue steps 2 and 3 until a message is made or the screen is filled.



STEP 5

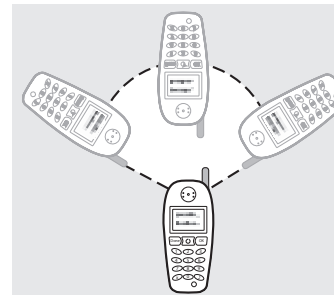
Press **OK** to choose **WHO** you want to send a message to*, then point your phone's antenna towards the phone that you want to send to.



STEP 6

Press **OK** to send your message.

*The rectangular box is highlighted when chosen.

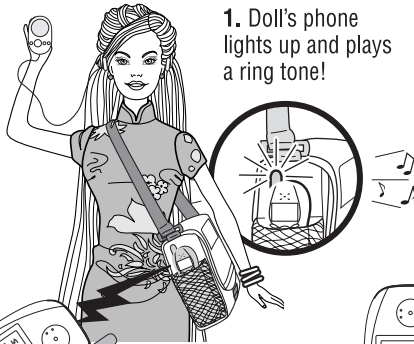


- Phones need to be positioned relative to each other and **unobstructed** (by doors or other objects) for the message to be sent and received.
- Phones work best indoors and in close proximity up to 10 feet. **IMPORTANT:** The phones may not work in direct sunlight.
- When the phones do not respond or the sounds become garbled, move the phones closer to each other or replace batteries.

Note: When not used for approximately 5 minutes, phone will enter a "sleep" mode to conserve batteries. To restart phone, press the **ON/OFF** button

Follow STEPS 1 through 6 then:

Send Barbie® doll a message and you'll get one back!



1. Doll's phone lights up and plays a ring tone!

2. Wait a bit. Hey! You have a message from Barbie® doll!



3. Press **OK** to read Barbie® doll's message.



4. Press **OK** to begin again!



Or, send a message to a friend!

Friend must also have I Message Girls™ doll or friend must also have a child sized I Message Girls™ phone.

Dolls and accessories sold separately. Subject to availability.

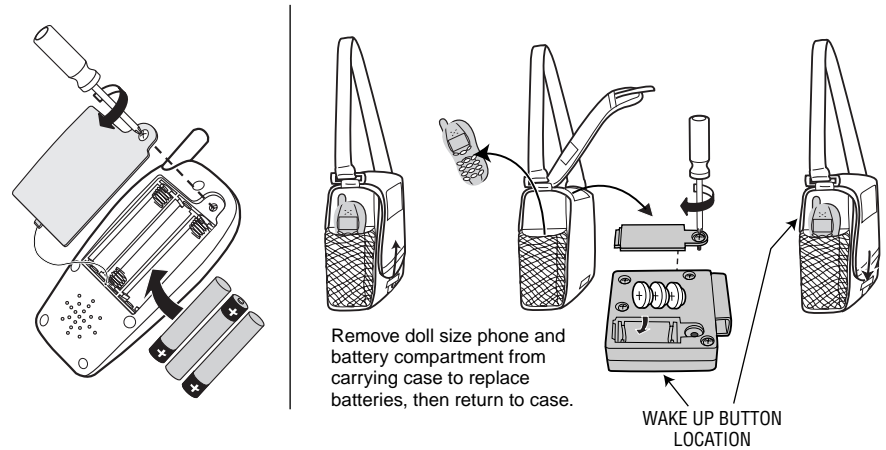


1. Child's phone plays a ring tone!

2. Press **OK** to read sender's message.



3. Press **OK** to begin again!



Remove doll size phone and battery compartment from carrying case to replace batteries, then return to case.

WAKE UP BUTTON LOCATION

Battery Replacement

Remove battery doors with a Phillips screwdriver (not included) and set aside. Insert three (3) "AAA" alkaline batteries in the "play" phone. Insert three (3) button cell batteries in the carrying case compartment. Note direction of batteries. Replace doors. For longer life, use only alkaline batteries.

LOW BATTERY INDICATORS:

- Replace batteries if the lights become dimmer and the sounds become garbled.
- If the phone is accidentally dropped in the water, remove batteries and allow phone to air dry. Replace with fresh batteries before operation.

BATTERY SAFETY INFORMATION

In exceptional circumstances batteries may leak fluids that can cause a chemical burn injury or ruin your toy (product). To avoid battery leakage:

- Non-rechargeable batteries are not to be recharged.
- Rechargeable batteries are to be removed from the toy before being charged (if designed to be removable).
- Rechargeable batteries are only to be charged under adult supervision (if designed to be removable).
- Do not mix alkaline, standard (carbon-zinc), or rechargeable (nickel-cadmium) batteries.
- Do not mix old and new batteries.
- Only batteries of the same or equivalent type as recommended are to be used.
- Batteries are to be inserted with the correct polarity.
- Exhausted batteries are to be removed from the toy.
- The supply terminals are not to be short-circuited.
- Dispose of battery(ies) safely.
- Do not dispose of this toy in a fire. The batteries inside may explode or leak.

Note: When not used for approximately 5 minutes, phones will enter a "sleep" mode to conserve batteries. To restart child size phone, press the **ON/OFF** button. To restart doll size phone, press the **WAKE UP** button.