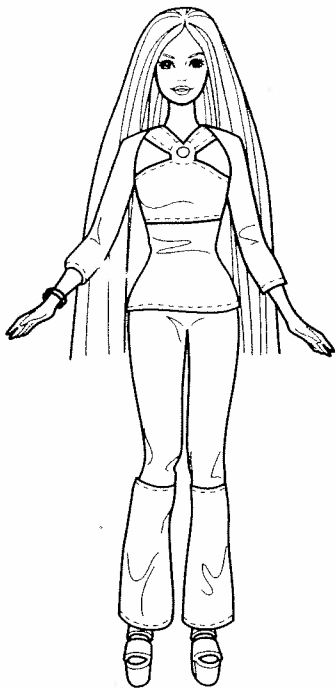
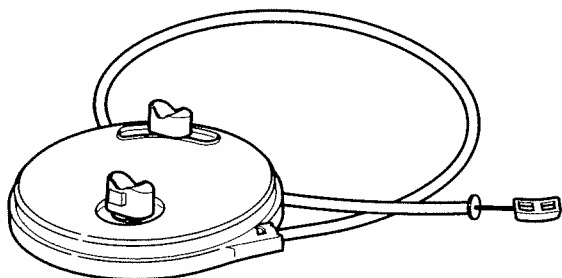
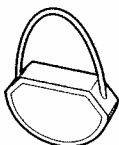
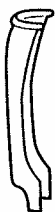
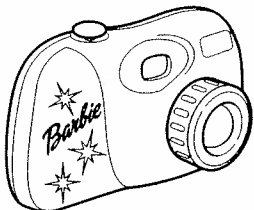


Barbie[®] Doll fashion photo

INSTRUCTIONS[™]



CONTENTS



Colors and decorations may vary from those shown.

Please remove everything from the package and compare to the contents shown here.
If any items are missing, please call 1-800-524-TOYS.



55620-0920-G1

Keep these instructions for future reference as they contain important information.

©2001 Mattel, Inc. El Segundo, CA 90245 U.S.A. All Rights Reserved.

Pose your doll on her fashion stand!

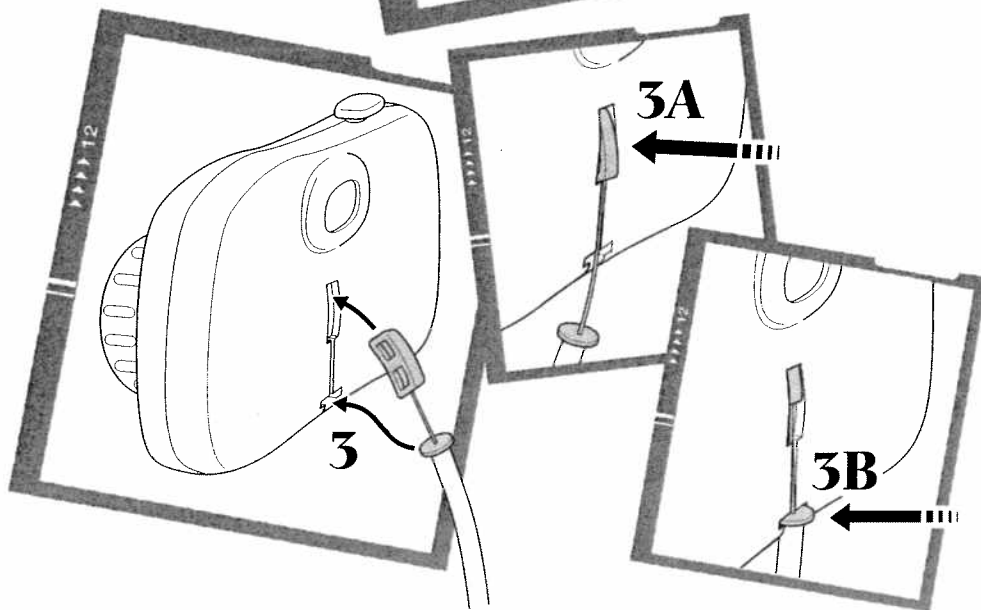
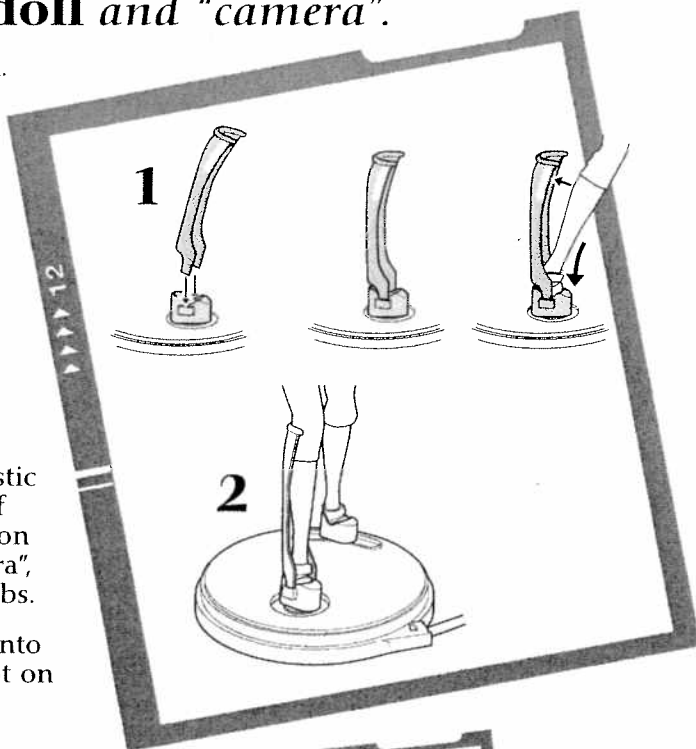
Set up the **doll** and "camera".

1. Install leg stand.

2. Both doll's feet are placed in holders on base.

3A. Install the plastic piece at end of tube into slot on back of "camera", between the ribs.

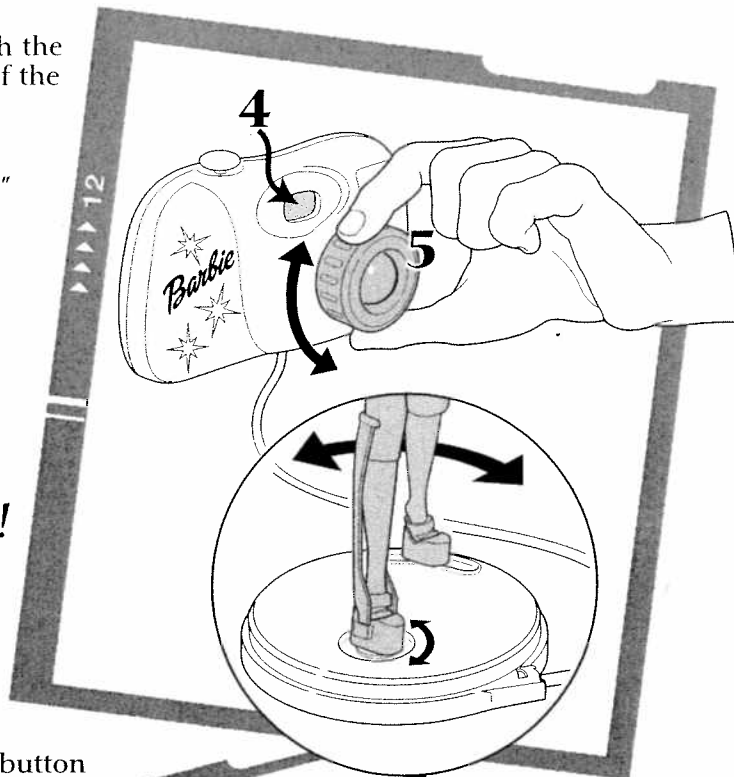
3B. Slip the tube into the bottom slot on "camera" back.



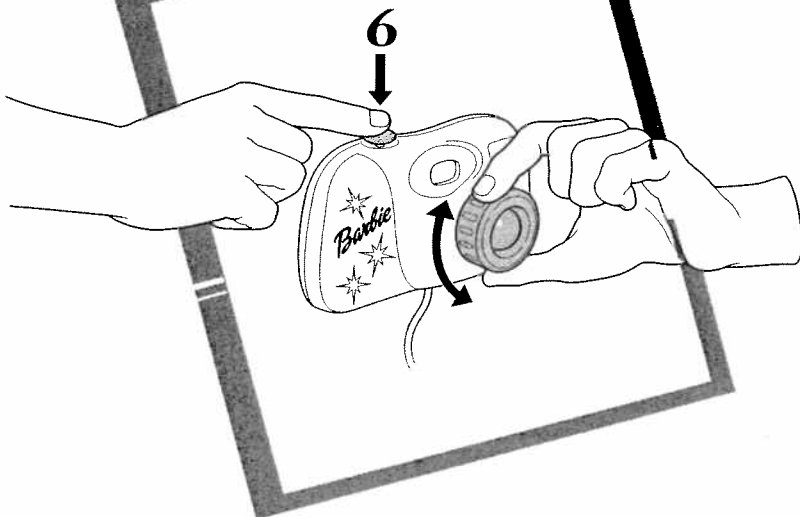
You **control** the *action* from the "camera"!

4. Look through the viewfinder of the "camera".
5. Turn the "camera lens" to move Barbie.

Turn
the lens
and your
doll's pose
changes!

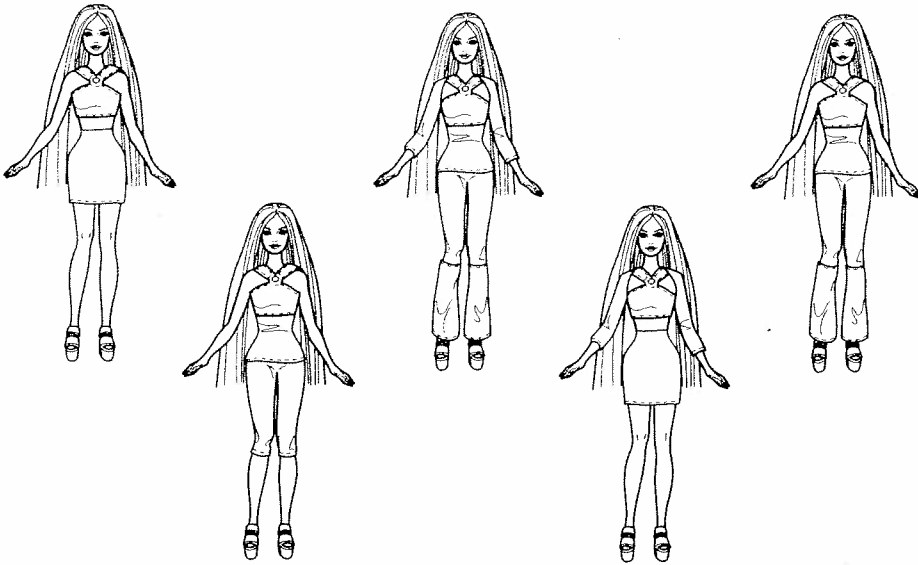


6. Click on the button to hear "click".



Doll's arms and waist are poseable.

Create many Fashion Looks!



TWO YEAR LIMITED WARRANTY

Mattel, Inc. warrants to the original consumer purchaser that this product will be free of defects in material or workmanship for two years (unless specified in alternate warranties) from the date of purchase. If defective, return the product along with proof of the date of purchase, postage prepaid, to Consumer Relations, 636 Girard Avenue, East Aurora, New York 14052 for replacement or refund at our option. This warranty does not cover damage resulting from unauthorized modification, accident, misuse or abuse. In no event shall we be responsible for incidental, consequential, or contingent damages (except in those states that do not allow this exclusion or limitation). **VALID ONLY IN U.S.A.** This warranty gives you specific legal rights and you may also have other rights which vary from state to state. Some states do not allow the exclusion of incidental or consequential damages, so the above exclusions or limitations may not apply to you.

Send only the product to the address above. Send all correspondence to Consumer Relations, Mattel, Inc., 333 Continental Blvd., El Segundo, California 90245-5012 U.S.A. Or you may phone us toll-free at 1-800-524-TOYS, Monday – Friday, 8:00 a.m. – 6:00 p.m. EST. Outside U.S.A., see telephone directory for Mattel listing.

CONSUMER INFORMATION

MATTY MATTEL™ boys



YOU CAN TELL IT'S MATTEL!™ CALL us toll-free or write with any comments or questions about our products or service. Monday-Friday 8:00 a.m.-6:00 p.m. Eastern Time. Outside U.S.A., see telephone directory for Mattel listing.

Consumer Relations, Mattel, Inc.
333 Continental Blvd.
El Segundo, CA 90245 USA

1(800) 524-TOYS

WE ARE DEDICATED TO QUALITY PRODUCTS.

WARNING:

CHOKING HAZARD – Small parts.
Not for children under 3 years.