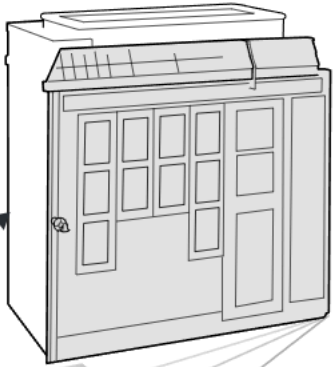
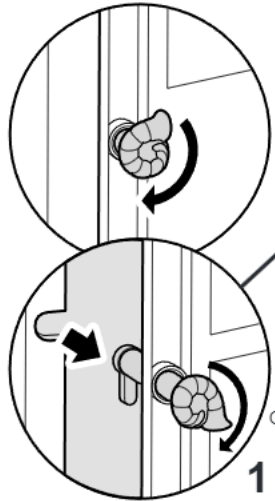
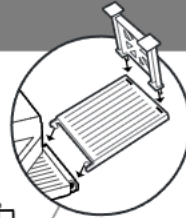
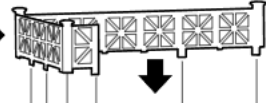
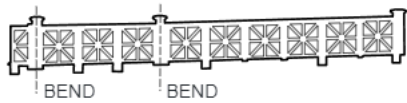




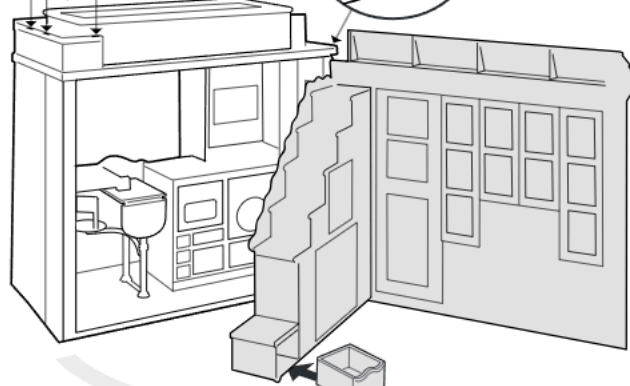
# Open & Assemble

FRONT SIDE

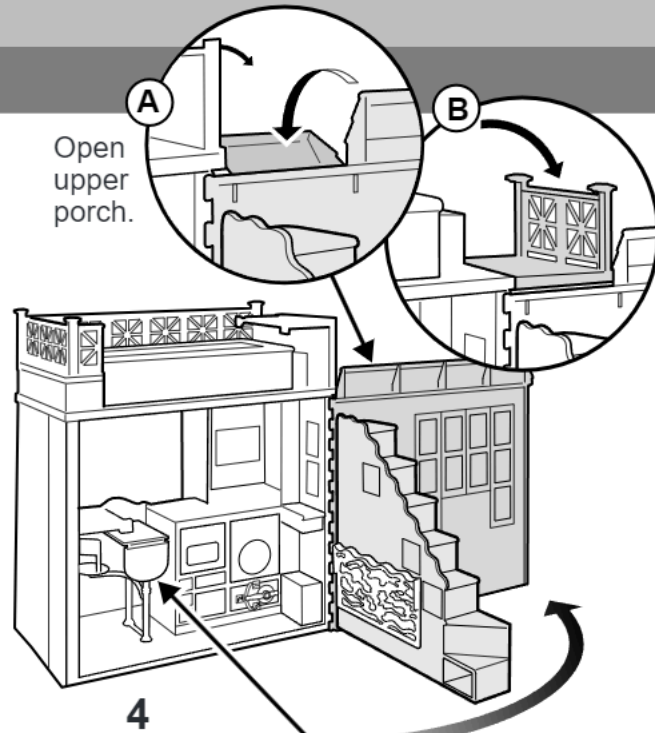


1 Unlatch and pull open the front wall.

2



3



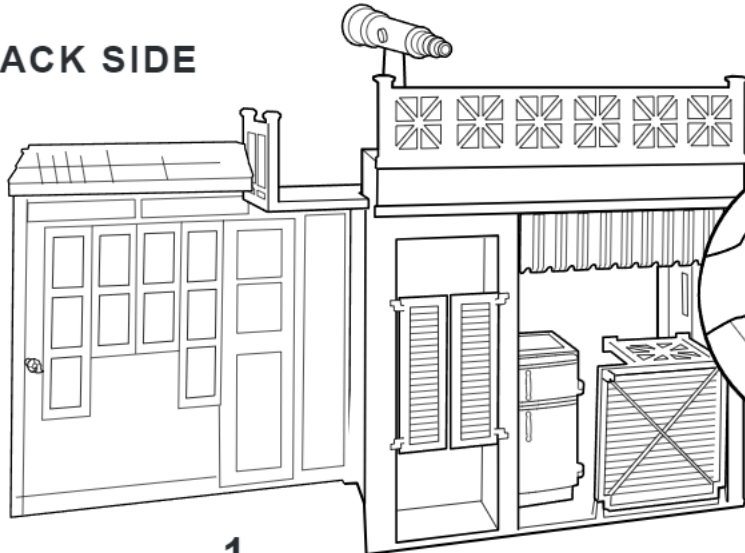
Open upper porch.

A

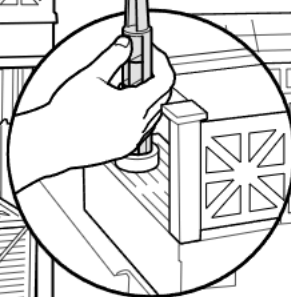
B

4

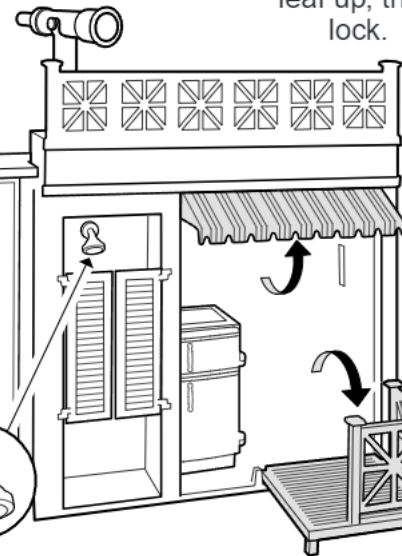
BACK SIDE



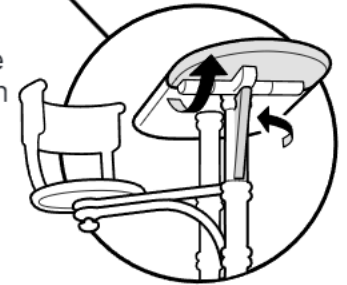
1



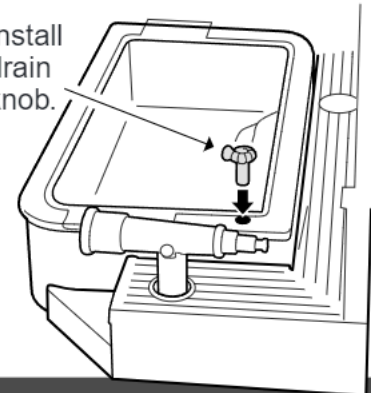
2



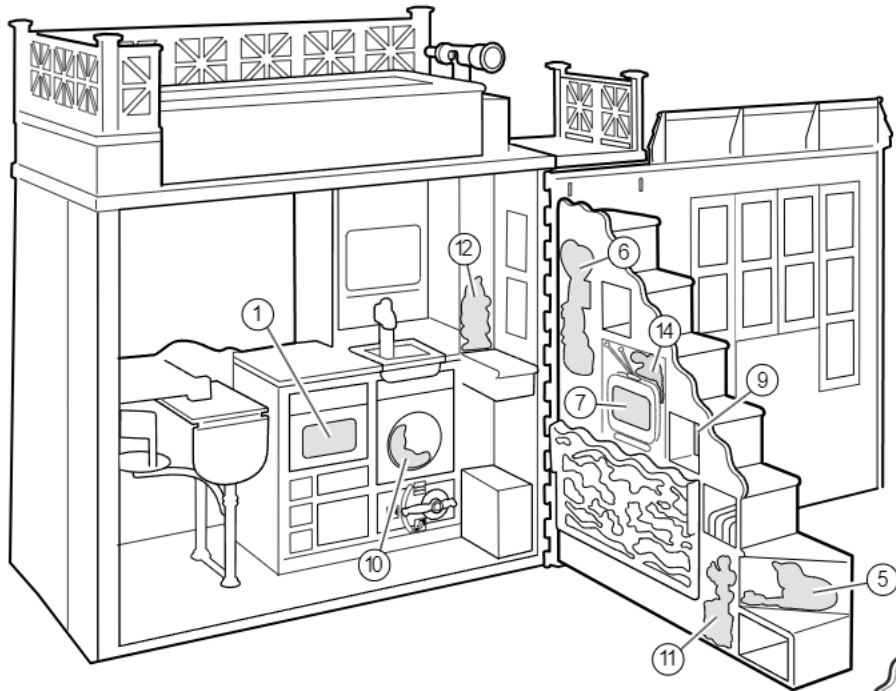
Swing table leaf up, then lock.



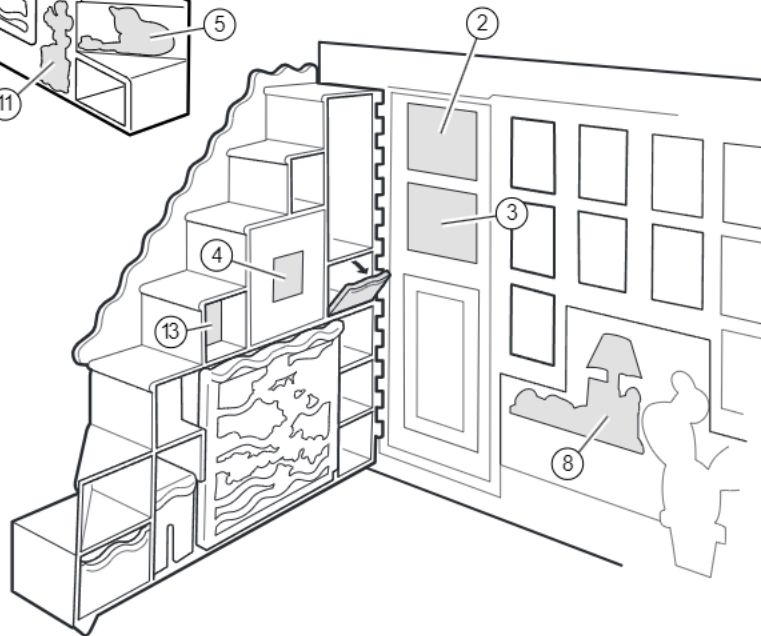
Install drain knob.



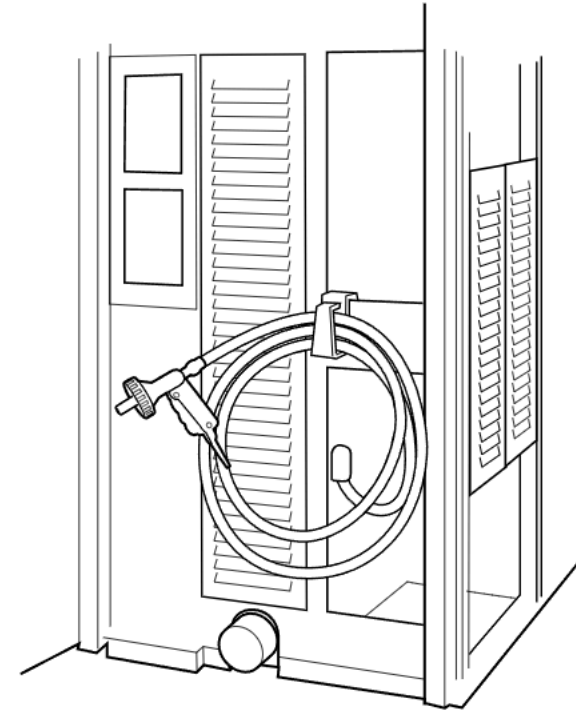
# Apply Labels



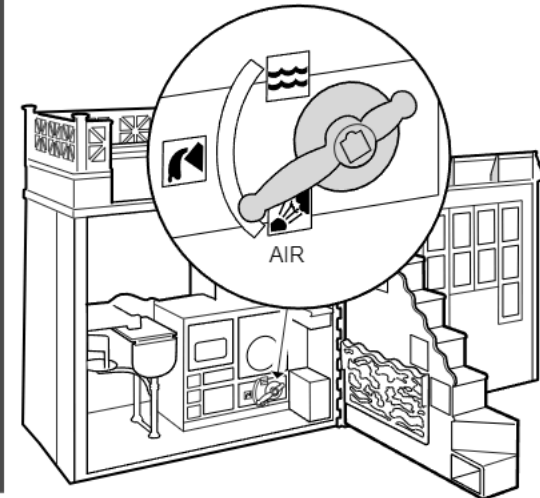
Remove labels from label sheet and apply as indicated. #20 to 24 can be positioned as desired.



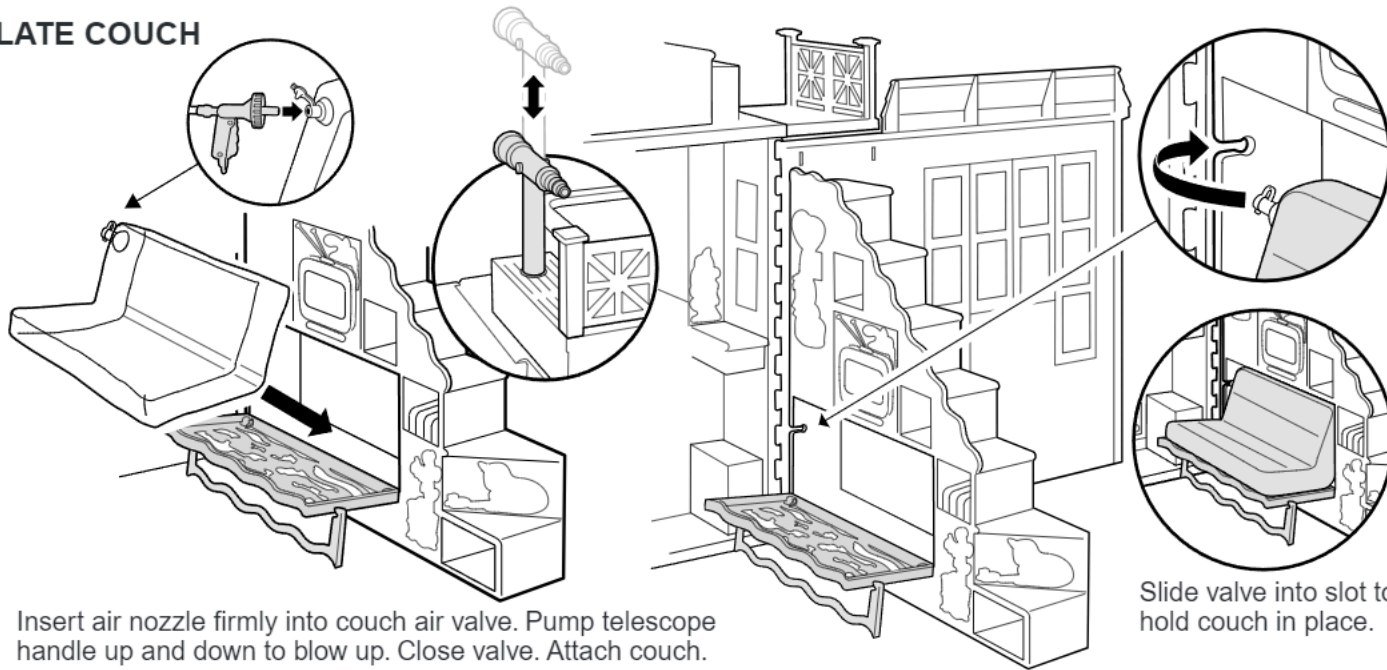
# Inflate



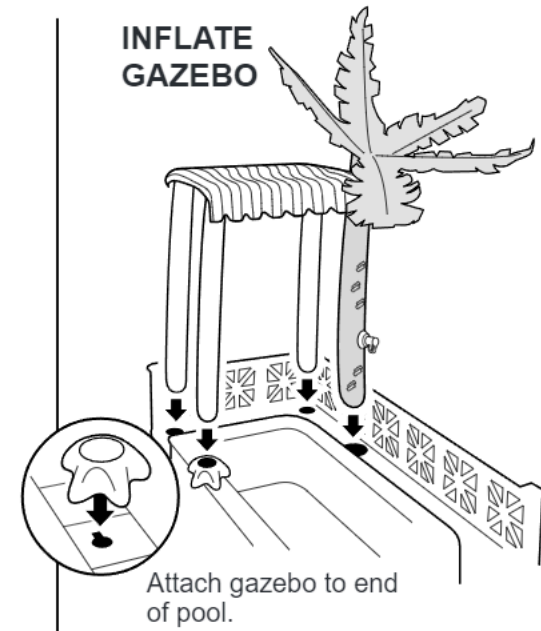
Remove air nozzle from shower wall and turn selector lever to "air".



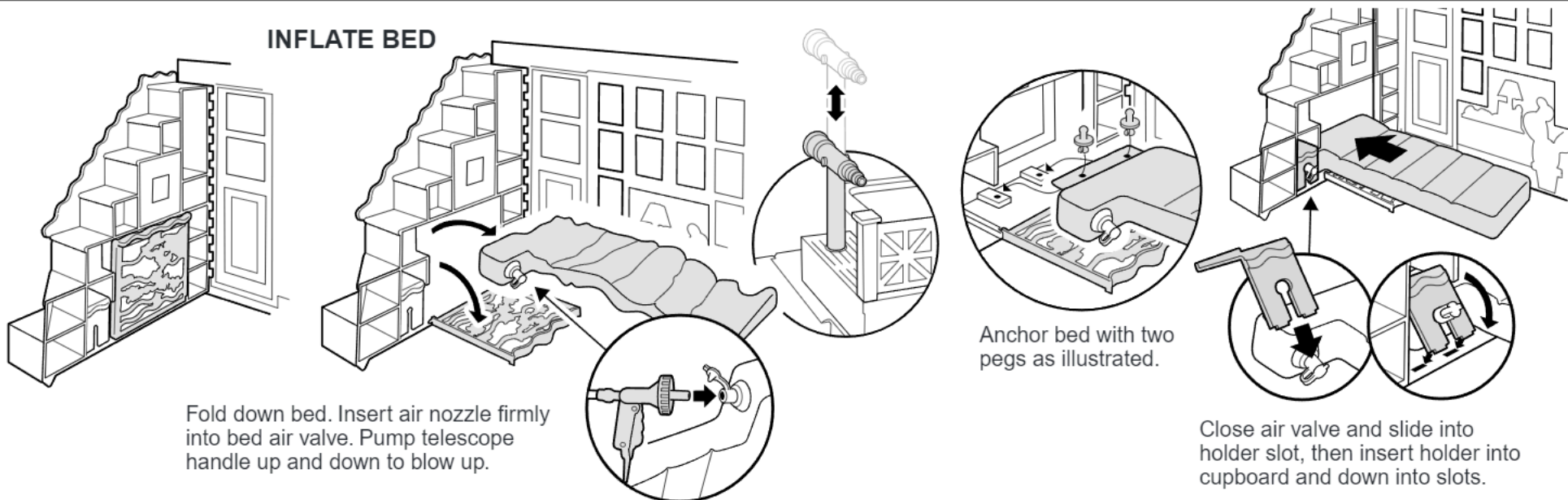
## INFLATE COUCH



## INFLATE GAZEBO



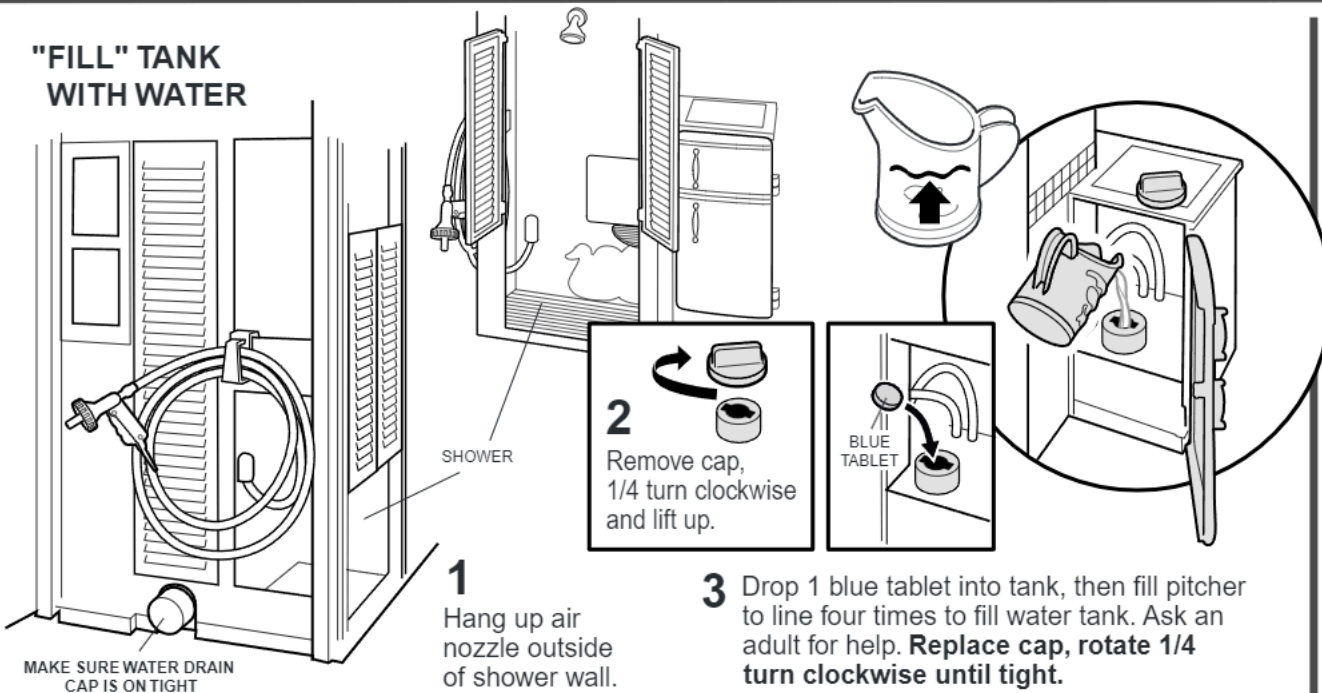
## INFLATE BED



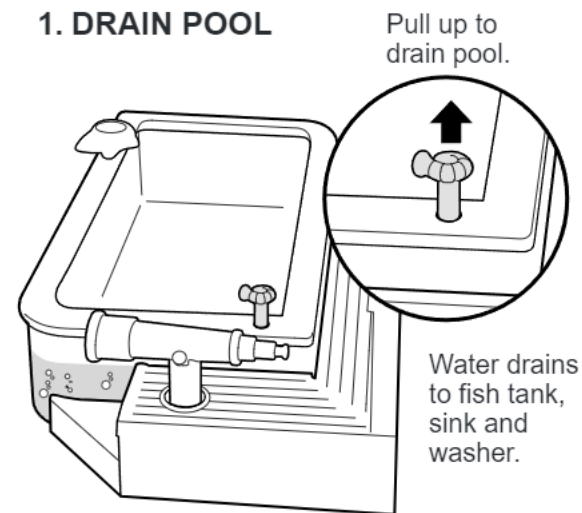
# Playtime

Caution: This is a water play toy. Protect play area before use.  
 Make sure drain cap is tight before adding water.  
 Tipping house may result in water leakage.

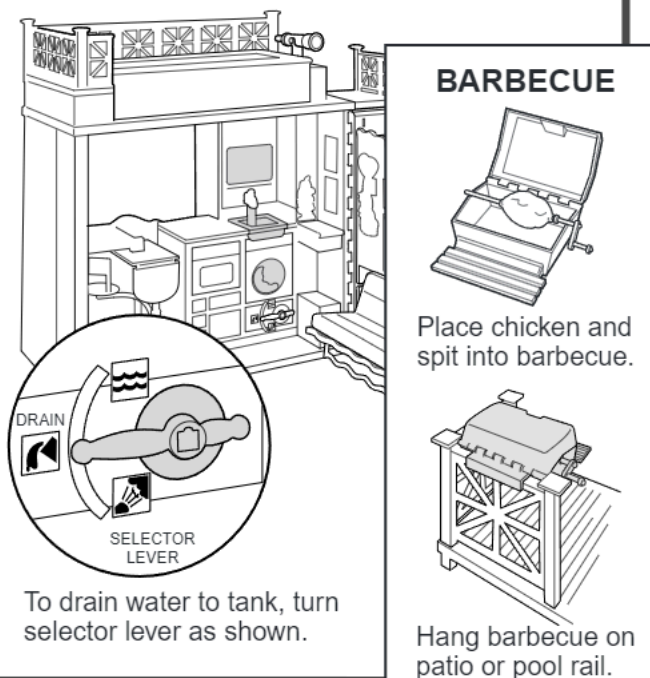
## "FILL" TANK WITH WATER



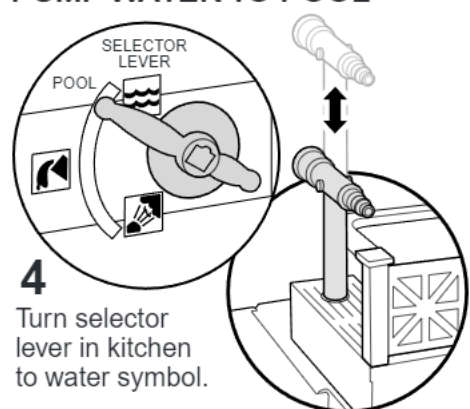
## 1. DRAIN POOL



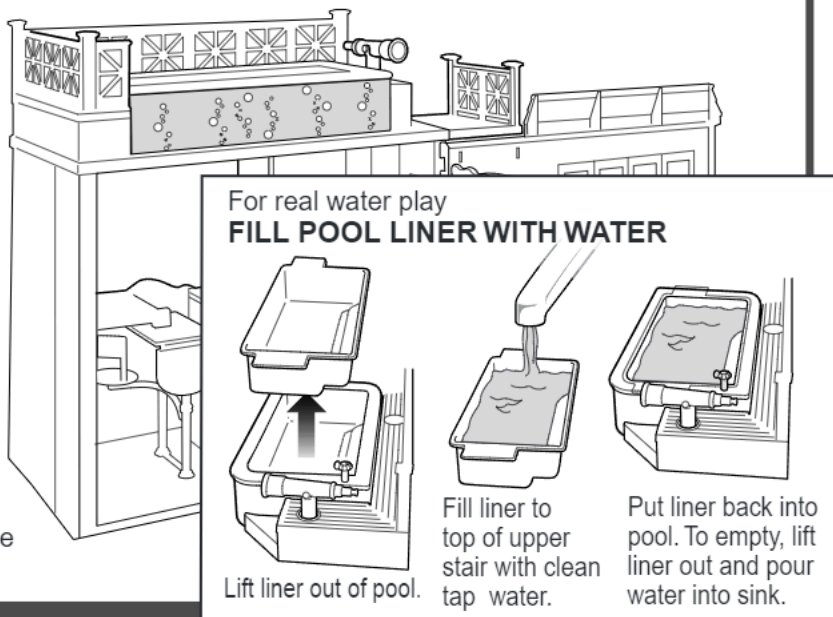
## 2. DRAIN FISH TANK, SINK AND WASHER



## PUMP WATER TO POOL



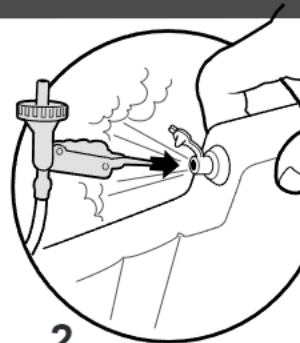
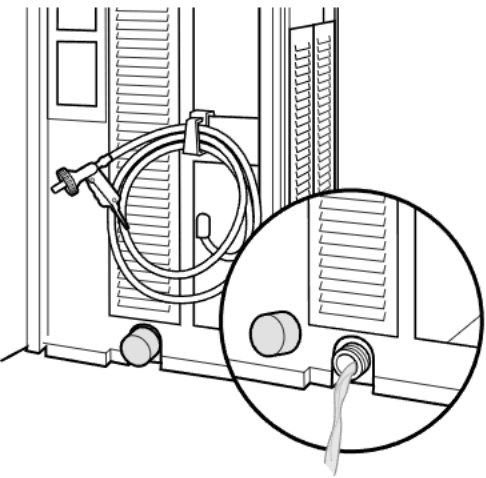
5 Pump telescope handle up and down to pump water into pool. Continue to pump for bubbles.



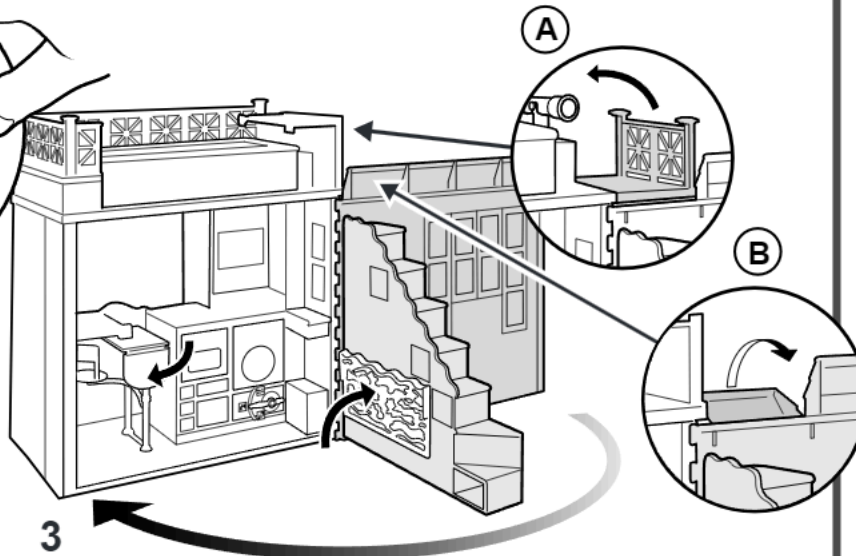
# Storage

Rinse, clean and dry all items thoroughly before storing.

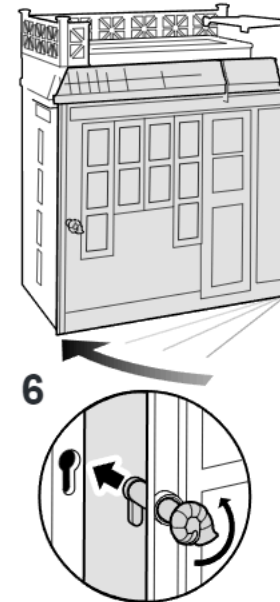
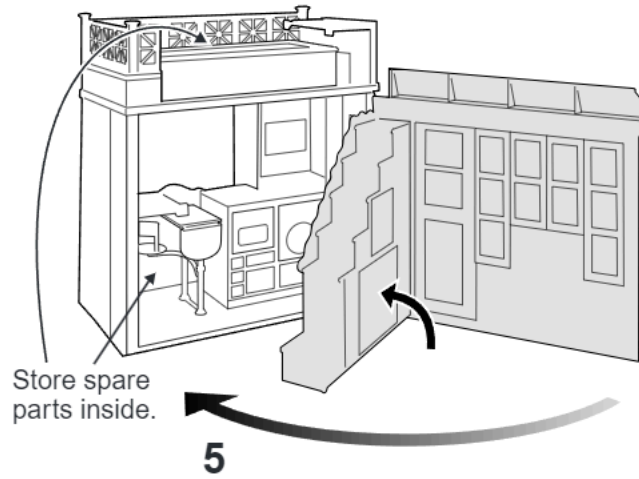
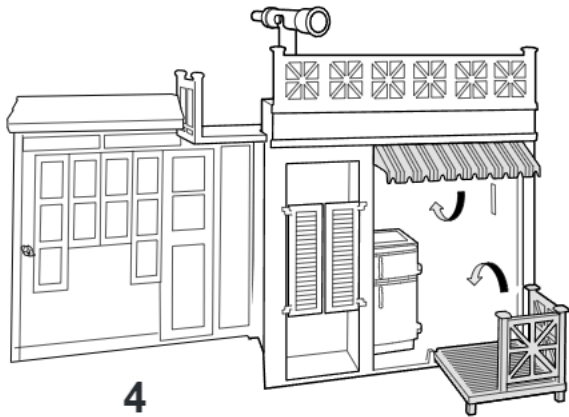
## 1 DRAIN WATER OUT OF HOUSE



**2** For storage: Insert pin (on handle of air hose) to deflate bed, couch, and gazebo. Compress by hand to force air out.



Drain pool, fish tank, sink and washer, then turn handle and remove cap to drain water out of toy before storage. A kitchen sink area is recommended.



**NON TOXIC – SAFETY TESTED**  
**Color Tablet Ingredients:**  
 Glucose, Sodium Bicarbonate, Citric Acid, PEG 180, Methyl Paraben, FD&C Blue #1/CI 42090

**WARNING:**  
**CHOKING HAZARD – Small parts.**  
 Not for children under 3 years.

### CONSUMER INFORMATION

**YOU CAN TELL IT'S MATTEL!** CALL us toll-free or write with any comments or questions about our products or service. Monday-Friday, 8:00 a.m.-5:00 p.m. PST; 11:00 a.m.-8:00 p.m. EST. Outside U.S.A., see telephone directory for Mattel listing. Consumer Affairs, Mattel, Inc., 333 Continental Blvd., El Segundo, CA 90245 USA

**1 (800) 524-TOYS**

**CE** CONFORMS TO THE SAFETY REQUIREMENTS OF ASTM F963.  
**We are dedicated to quality products.**

### TWO-YEAR LIMITED WARRANTY

Mattel, Inc. warrants to the original consumer purchaser of any product it manufactures that the product will be free of defects in material or workmanship for two years (unless specified in alternate warranties) from the date of purchase. If defective, return the product along with proof of the date of purchase, postage prepaid, to Consumer Adjustment Center, 15930 E. Valley Boulevard, City of Industry, California 91744 for replacement or refund at our option. This warranty does not cover damage resulting from unauthorized modification, accident, misuse, or abuse. **Valid only in U.S.A.** This warranty gives you specific legal rights and you may also have other rights which vary from state to state.

Send only the product to the address above. Send all correspondence to Consumer Affairs, Mattel, Inc., 333 Continental Blvd., El Segundo, California 90245-5012, U.S.A. Or you may phone us toll-free at 1-800-524-TOYS, Monday – Friday, 8:00 a.m. – 5:00 p.m. PST; 11:00 a.m. – 8:00 p.m. EST.

[www.barbie.com](http://www.barbie.com)